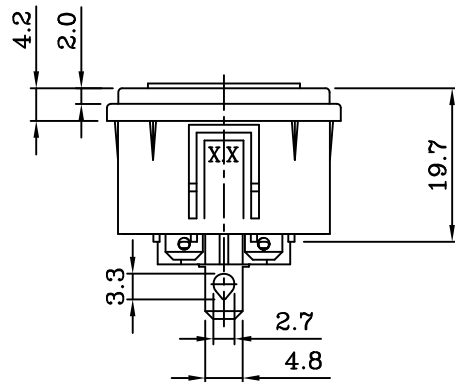


PANEL CUT-OUT



XX	A
1.5	1.6
1.7	1.8
2.0	2.1
2.5	2.6



SPECIFICATION (SWITCH) :

1. CIRCUIT : DPST ON-OFF.
2. CONTACT RESISTANCE : 30MΩ Max.
3. INSULATION RESISTANCE : DC 500V 100MΩ Min.
4. WITHSTAND VOLTAGE : AC 1000V 1 Minute.
5. OPERATION FORCE : 800±300g.
6. ELECTRICAL LIFE : 10,000 Cycles At Full Load.
7. OPERATING TEMPERATURE RANGE : -25°C ~ +85°C.
8. SOLDERING : 280°C FOR 3 Sec.
9. DIELECTRIC STRENGTH: 2000V AC 1 Minute.
10. BODY MATERIAL : Black Glass-Fiber Thermoplastic. UL 94V-2~0.

SPECIFICATION:

1. INSULATION RESISTANCE: OVER 100MΩ 500V DC.
2. DIELECTRIC STRENGTH: 2000V AC ONE MINUTE.
3. Body Materil: Black Glass-Fiber Thermoplastic . UL 94V-2~0

Rating:AC 10A 250V	
Mark	Safety Regulation
CCC	CCC
Rating:AC 15A 250V	
Mark	Safety Regulation
CULUS	CULUS

DRAWING: C: DG\NEW-R\T\301SN\R-301SN(77) XX. DWG



富灣股份有限公司
RICH BAY COMPANY LTD.
台北縣樹林市東興街57號
NO. 57, Tung Hsing St., Shu-Lin Town,
Taipei Hsien, Taiwan, R. O. C.
TEL: 886-2-86867781~4 FAX: 886-2-86867780
http://www.richbay.com.tw

DRAWN BY	UNIT	UNIT QTY	SCALE	TOLERANCE		PRODUCT NO.	R-301SN(77) XX	REV
	mm			1	1:1			
RD		1	1:1	ID NO	110222A01	INTERIM NO.		A
張育誠		APPROVED BY	RD	DESCRIPTION		NEW NO.		